

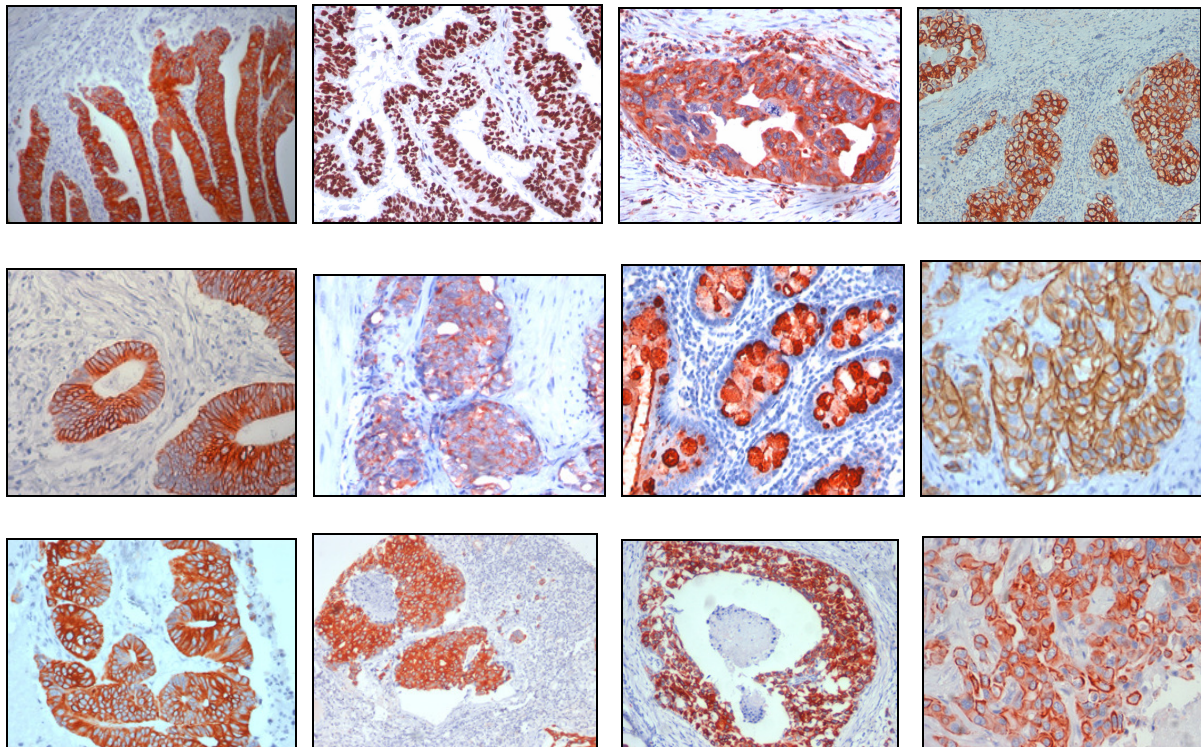


*Advancing Health Care through Diagnostics*

---

*FOR ALL YOUR RESEARCH & IVD APPLICATIONS*

## **MILAGEN DIAGNOSTICS**



*IHC MONOCLONAL ANTIBODIES*

*30% DISCOUNT PRICE*

***...ARE HERE***

---

Milagen Inc., 1255 Park Avenue, Suite B, Emeryville, CA 94608-3679 USA

Contact : Rosaura P.C. Valle, PhD, VP Operations & Strategic Alliances

Ph : 510-597-1244 x 12, [valler@milagen.com](mailto:valler@milagen.com)

Ordering : 510-597-1244, [info@milagen.com](mailto:info@milagen.com), <http://www.milagen.com>



**Mouse Monoclonal Anti-Human**  
***Cathepsin D***

# MAB009: tissue culture supernatant with 0.09% sodium azide (0.2ml or 1ml)

**Immunogen:** synthetic peptide derived from the human cathepsin D protein

**Expected staining pattern:** cytoplasmic

**Positive control:** breast cancer, SKBr3 cells

**Mouse Monoclonal Anti-Human**  
***Carcinoembryonic antigen (CEA)***

# MAB2007: tissue culture supernatant with 0.09% sodium azide (0.2ml or 1ml)

**Immunogen:** human CEA protein

**Expected staining pattern:** cytoplasmic and luminal membrane

**Positive control:** colon carcinomas, WiDr & Sw116 cells

**Mouse Monoclonal Anti-Human**  
***Estrogen Receptor (ER)***  
***Analyte Specific Reagent***

# MAB003: tissue culture supernatant with 0.09% sodium azide (0.2ml or 1ml)

**Immunogen:** synthetic peptide derived from the human ER $\alpha$  protein

**Expected staining pattern:** nuclear

**Positive control:** breast cancer, MCF-7 cells

**Mouse Monoclonal Anti-Human**  
***MUC4***

# MAB032: tissue culture supernatant with 0.09% sodium azide (0.2ml or 1ml)

**Immunogen:** synthetic peptide derived from the human MUC-4 protein

**Expected staining pattern:** cytoplasmic and membrane

**Positive control:** colon cancer and lung cancer

**Mouse Monoclonal Anti-Human**  
***Neuron Specific Enolase (NSE)***

# MAB010: tissue culture supernatant with 0.09% sodium azide (0.2ml or 1ml)

**Immunogen:** synthetic peptide derived from the human NSE protein  $\gamma$  subunit

**Expected staining pattern:** cytoplasmic

**Positive control:** IMR5 cells, pancreas, lung cancer, neuroendocrine colon tumor cells (colo320)

**Mouse Monoclonal Anti-Human**  
***Progesterone Receptor (PR)***  
***Analyte Specific Reagent***

# MAB004 tissue culture supernatant with 0.09% sodium azide (0.2ml or 1ml)

**Immunogen:** synthetic peptide derived from a common sequence of both isoforms A & B of the human PR protein

**Expected staining pattern:** nuclear

**Positive control:** breast cancer, T47D, MCF-7 cells

**Mouse Monoclonal Anti-Human**  
***Prostate specific antigen (PSA)***

# MAB2008: tissue culture supernatant with 0.09% sodium azide (0.2ml or 1ml)

**Immunogen:** human PSA protein

**Expected staining pattern:** cytoplasmic

**Positive control:** normal prostate, prostate cancer, LNCAP cells

**Mouse Monoclonal Anti-Human**  
***Vimentin***

# MAB2003: tissue culture supernatant with 0.09% sodium azide (0.2ml or 1ml)

**Immunogen:** synthetic peptide derived from the human vimentin protein

**Expected staining pattern:** cytoplasmic

**Positive control:** melanoma, lymphoma, glioma, U2OS and PC3 cells

**INTENDED USE**

The products listed herein are for Research and In Vitro Diagnostic use, except when ASR is indicated.

**For In Vitro Diagnostic Use (except ASR):**

All products are intended for qualitative immunohistochemistry with normal and neoplastic formalin-fixed, paraffin-embedded tissue sections to be viewed by light microscopy. Evaluations should be made within the context of the patient's clinical history and other diagnostic tests made by a qualified pathologist.